

Agilent 85106D

Millimeter-wave Network Analyzer System

Product Overview

Discontinued Product Information — For Support Reference Only —

Information herein, may refer to products/services no longer supported. We regret any inconvenience caused by obsolete information. For the latest information on Agilent's test and measurement products go to: www.agilent.com/find/products

In the US, call Agilent Technologies at 1-800-829-4444
(any weekday between 8am–5pm in any U.S. time zone)

World-wide Agilent sales office contact information is available at:
www.agilent.com/find/contactus

33 GHz to 110 GHz

The Agilent Technologies 85106D millimeter-wave network analyzer system extends the performance of the 8510C network analyzer to the millimeter-wave frequencies. This system can be configured for measurements in the 33 to 50 GHz, 40 to 60 GHz, 50 to 75 GHz, and 75 to 110 GHz waveguide bands.

The 85106D network analyzer system provides the best performance to meet your new design and test challenges, with high accuracy, dynamic range and frequency resolution for measurements at the millimeter-wave frequencies. The impressive accuracy of the 85106D system can be attributed to the “thru, reflect, line” TRL calibration standards which are used to characterize and remove systematic errors from the measurement. With a TRL calibration, the residual system

uncertainties can be reduced to 46 to 50 dB directivity and source match.

For millimeter-wave components that require the measurement of a wide range of power levels, a specified high dynamic range of 87 to 75 dB can be achieved with the 85106D.

Fully integrated for your convenience

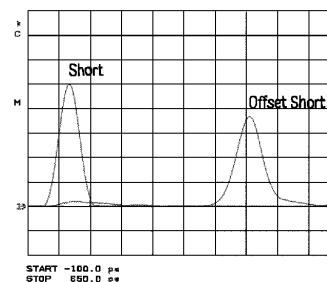
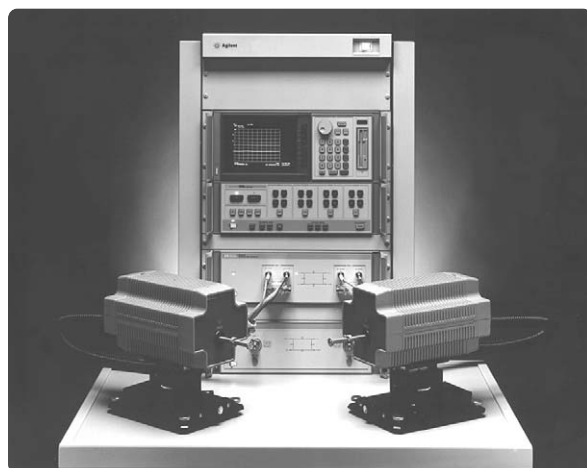
The millimeter-wave network analyzer system setup is extremely easy, so you can begin making measurements immediately. All of the necessary amplification and switching for millimeter-wave S-parameter measurements are integrated into the Agilent 85105A millimeter-wave test set controller. The waveguide test set hardware is integrated into two 85104A series millimeter-wave test set modules. Each module contains

one-half of a full S-parameter test set, including the frequency multiplier, directional couplers, harmonic mixers, and isolators. These test set modules are easily maneuverable on work surfaces during calibration and measurement.

Distortion-free measurements in frequency and time

Option 010 of the 85106D system adds time-domain capability to the network analyzer, enabling transformations from frequency domain data to the time domain. Time domain is an extremely powerful tool that allows you to gain further insight into the behavior of a component or circuit.

In addition to correcting for the non-linear phase shift versus frequency of standard rectangular waveguide, the 85106D also corrects for the dispersion in the time domain. Using the “waveguide delay” function, the time-domain response can be corrected for any dispersive effects.



Accurately evaluate the response of your device in the time domain by removing the dispersive effects of the waveguide.



Agilent Technologies

Microwave and millimeter-wave coverage

A combination microwave/millimeter-wave S-parameter system can be configured in the same rack by adding a microwave test set to the 85106D system. No reconnections are required when switching between millimeter-wave and microwave operation. The Agilent 85105A millimeter-wave controller is equipped with the IF and RF switching capability for routing millimeter-wave or microwave test set. No external switches or switch drivers are necessary. The RF and IF signals are automatically switched to the appropriate test set and system states are quickly and easily recalled from the external disc drive with a few front panel keystrokes.

Economical upgrade path

It is both economical and convenient to add other waveguide bands to the 85106D. Simply disconnect the 85104A test set modules from the millimeter-wave controller, and connect the new test set modules. The appropriate configuration is easily recalled from the disc drive with a few front panel keystrokes.

It is also possible to expand an existing 8510B or 8510C microwave network analyzer system to millimeter-wave to meet new design or test challenges. A single 8510 can control multiple test sets, which means that you can continue to use your microwave test set along with your millimeter-wave system with no degradation in performance.

Precision waveguide flanges improve performance

All millimeter-wave standards and adapters from Agilent Technologies utilize the precision waveguide flange design. This design uses precision locating pins, a lip around the perimeter of the flange, and tighter tolerances of the alignment pin locations and pin diameters to minimize the possible misalignment of the waveguide apertures.

The millimeter-wave precision waveguide flange makes its greatest contribution by improving flange connection repeatability, which is the biggest source of error after calibration.

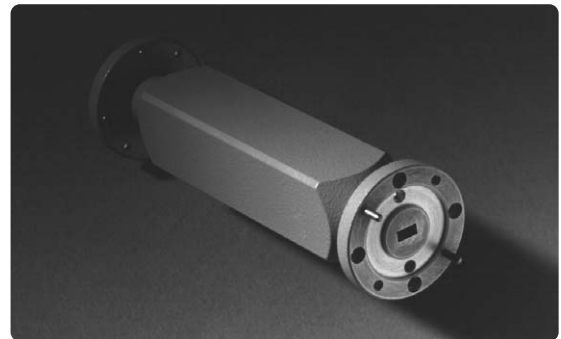
Flange repeatability can be improved by three orders of magnitude when compared to the standard waveguide

flange. This repeatability error is considerably less than the residual system errors after error correction.

Waveguide calibration and verification kits

The Agilent 11644A Series waveguide calibration kits provide the standards necessary to take full advantage of the built-in accuracy enhancement capability of the 8510C network analyzer. Each calibration kit contains two straight waveguide test port sections, a flush short circuit, a precision quarter-wavelength shim, and a fixed-load or sliding load termination. In addition to providing the "offset" for the offset short and offset load standards, the precision shim in the 11644A Series calibration kits is also used as the "line" standard for a TRL calibration.

The Agilent 11645A Series waveguide verification kit contains a standard section, a standard mismatch, and 20 dB and 50 dB attenuators. Each device in the verification kit is supplied with data and measurement uncertainties that are traceable to the National Institute of Standards and Technology (NIST). As with all Agilent verification kits, the automated system verification process compares the device data with the data that your system actually measured.



Agilent 85106D System performance

The following specifications describe the system performance of the 8510C network analyzer in the 85106D configuration for measurements from 33 to 110 GHz in four waveguide bands. The system hardware includes the following:

Test set: Agilent 85104A series

RF sources (Two each): Agilent 83621B synthesized source

Calibration kit: Agilent 11644A series waveguide calibration kit

Calibration technique: TRL two-port calibration

Dynamic range¹ (for transmission measurements)

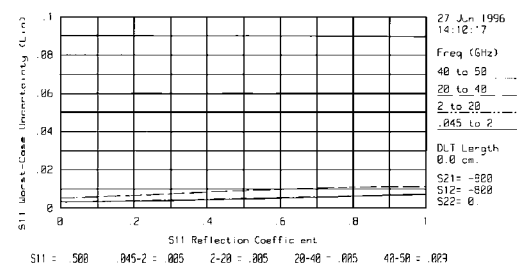
	Frequency Range (GHz)			
	35 to 50	40 to 60	50 to 75	75 to 110
Maximum power (measured at port 2)	+12 dBm	+10 dBm	+10 dBm	0 dBm
Reference power (at port 1, nominal)	0 dBm	0 dBm	0 dBm	-3 dBm
Minimum power (measured at port 2)	-87 dBm	-87 dBm	-75 dBm	-79 dBm
Receiver dynamic range	99 dB	97 dB	85 dB	79 dB
System dynamic range	87 dB	87 dB	75 dB	76 dB

Measurement port characteristics

RESIDUAL	Frequency Range (GHz)			
	33 to 50	40 to 60	50 to 75	75 to 110
Directivity	50 dB	50 dB	50 dB	46 dB
Source match	50 dB	50 dB	50 dB	46 dB
Load match	50 dB	50 dB	50 dB	46 dB
Reflection tracking	±0 dB	±0 dB	±0 dB	±0 dB
Transmission tracking	±0.002 dB	±0.002 dB	±0.002 dB	±0.003 dB
Crosstalk ²	110 dB	110 dB	98 dB	99 dB

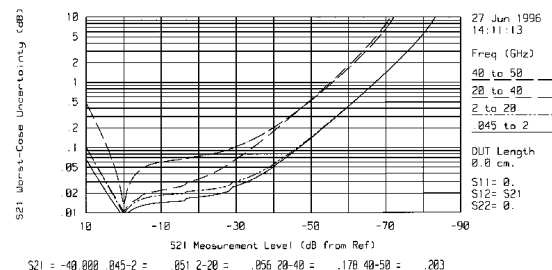
Measurement uncertainty

Reflection measurements



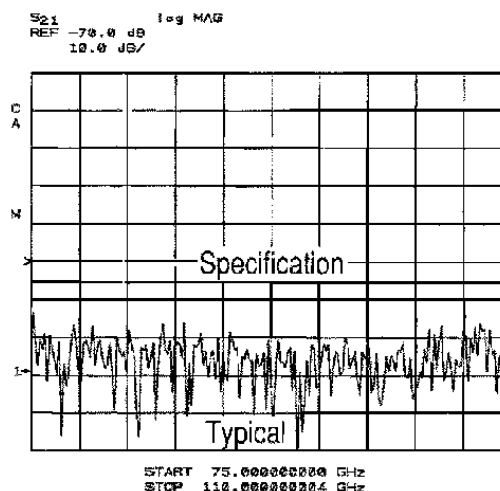
Magnitude³

Transmission measurements



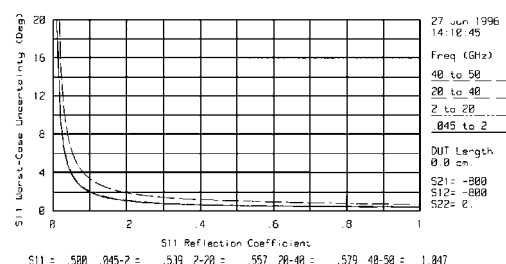
Magnitude⁴

Specifications describe the instrument's warranted performance over the temperature range of 23° C ± 3° C (except where noted). Supplemental characteristics are intended to provide useful instrument applications information by giving typical but non-warranted performance parameters. These are denoted as "typical," "nominal," or "approximately."

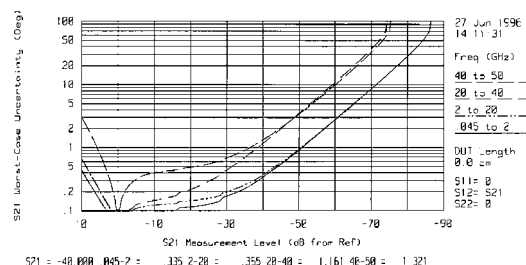


System dynamic range

RAW (Typical)	Frequency Range (GHz)			
	33 to 50	40 to 60	50 to 75	75 to 110
Directivity	36 dB	34 dB	33 dB	33 dB
Source match	31 dB	27 dB	31 dB	29 dB
Load match	31 dB	27 dB	31 dB	29 dB



Phase⁵



Phase⁵

- Limited by compression level and system noise floor. Noise floor is measured with full two-port error correction, 1024 averages.
- Does not include noise.
- The graph for reflection measurement uncertainty applies to a one-port device.
- The graph for transmission measurement uncertainty assumes a well-matched device.
- Phase detector accuracy is better than +0.02 degrees, useful for measurements where only phase changes.

Ordering Information

Agilent 85106D Millimeter-wave network analyzer

The system consists of:

8510C network analyzer

85105A millimeter-wave controller

83621B synthesized source (RF source)

83621B synthesized source (LO source)

1600 mm system rack

Two Agilent 85104A Series millimeter-wave test set modules and appropriate 11644A series calibration kit must be ordered to complete the system.

Installation and one year on-site service are included at no additional charge.

Option 001 Add an 8517B (45 MHz to 50 GHz) S-parameter test set, 85056A 2.4 mm calibration kit, and 85133F 2.4 mm test port cable set. Replace an 83621B (RF) with an 83651B synthesized source.

Option 007 Add high power and high dynamic range configuration to the 8517B test set (must also order Option 001)

Option 010 Add time-domain capability to the 8510C

Option 230 220V/240V line voltage operation

Other system components required but not supplied with the 85106D system:

85104A series test set modules

11644A series calibration kits

Waveguide Hardware

To complete a millimeter-wave system, also order two Agilent 85104A series test set modules and an 11644A series waveguide calibration kit.

An 11645A series waveguide verification kit is strongly recommended for system installation and performance verification.

33 to 50 GHz (WR-22)

Q85104A WR-22 test set module (two are required)

Q11644A WR-22 calibration kit (required)

Q11645A WR-22 verification kit (strongly recommended)

40 to 60 GHz (WR-19)

U85104A WR-19 test set module (two are required)

U11644A WR-19 calibration kit (required)

U11645A WR-19 verification kit (strongly recommended)

50 to 75 GHz (WR-15)

V85104A WR-15 test set module (two are required)

V11644A WR-15 calibration kit (required)

V11645A WR-15 verification kit (strongly recommended)

75 to 110 GHz (WR-10)

W85104A WR-10 test set module (two are required)

W11644A WR-10 calibration kit (required)

W11645A WR-10 verification kit (strongly recommended)

Related Literature

Agilent 8510C Family Network Analyzer Configuration Guide

Agilent 8510 System Solutions Brochure

Pub. Number

5091-8967E

5965-8837E



Agilent Email Updates

www.agilent.com/find/emailupdates

Get the latest information on the products and applications you select.

www.agilent.com

Agilent Technologies' Test and Measurement Support, Services, and Assistance

Agilent Technologies aims to maximize the value you receive, while minimizing your risk and problems. We strive to ensure that you get the test and measurement capabilities you paid for and obtain the support you need. Our extensive support resources and services can help you choose the right Agilent products for your applications and apply them successfully. Every instrument and system we sell has a global warranty. Two concepts underlie Agilent's overall support policy: "Our Promise" and "Your Advantage."

Our Promise

Our Promise means your Agilent test and measurement equipment will meet its advertised performance and functionality. When you are choosing new equipment, we will help you with product information, including realistic performance specifications and practical recommendations from experienced test engineers. When you receive your new Agilent equipment, we can help verify that it works properly and help with initial product operation.

Your Advantage

Your Advantage means that Agilent offers a wide range of additional expert test and measurement services, which you can purchase according to your unique technical and business needs. Solve problems efficiently and gain a competitive edge by contracting with us for calibration, extra-cost upgrades, out-of-warranty repairs, and onsite education and training, as well as design, system integration, project management, and other professional engineering services. Experienced Agilent engineers and technicians worldwide can help you maximize your productivity, optimize the return on investment of your Agilent instruments and systems, and obtain dependable measurement accuracy for the life of those products.

For more information on Agilent Technologies' products, applications or services, please contact your local Agilent office.

Phone or Fax

United States:

(tel) 800 829 4444

(fax) 800 829 4433

Canada:

(tel) 877 894 4414

(fax) 800 746 4866

China:

(tel) 800 810 0189

(fax) 800 820 2816

Europe:

(tel) 31 20 547 2111

Japan:

(tel) (81) 426 56 7832

(fax) (81) 426 56 7840

Korea:

(tel) (080) 769 0800

(fax) (080) 769 0900

Latin America:

(tel) (305) 269 7500

Taiwan:

(tel) 0800 047 866

(fax) 0800 286 331

Other Asia Pacific

Countries:

(tel) (65) 6375 8100

(fax) (65) 6755 0042

Email: tm_ap@agilent.com

Contacts revised: 09/26/05

The complete list is available at:
www.agilent.com/find/contactus

Product specifications and descriptions in this document subject to change without notice.

© Agilent Technologies, Inc. 1997, 2000, 2005, 2006

Printed in USA, July 13, 2006

5964-4229E



Agilent Technologies